

LTSC STATEMENT OF PURPOSE

Working in collaboration, not competition



1. Who We Are

The Lancashire Third Sector Consortium [LTSC] for Mental Health is an Unincorporated Association of 50 plus members drawn from across Lancashire. The members range from large to small organisations, local community agencies to those with a national footprint and service users and carers and other interested parties. The LTSC work as a united body to develop the capability and capacity of its members and to ensure that the mental health services in Lancashire meet the stated needs of Service Users and Carers.

2. Aims

In order to fulfil the needs of our membership, we aim to provide a Consortium that:

- i. Allows for a cross fertilisation of ideas and experience across the membership.
- ii. Supports those agencies that might otherwise be isolated, for whatever reason.
- iii. Provides the opportunity to network with likeminded professionals.
- iv. Keeps members apprised of new and innovative mental health practices, as well as general management approaches.
- v. Provides access to training that might not otherwise be feasible.
- vi. Supports members to tender for contracts – in terms of providing awareness of suitable partners and knowledge of available tenders.
- vii. Allows members to remain independent.
- viii. Helps members to be prepared for new initiatives / government policies.

We also aim to support the needs of our partners by:

- i. Acting as a single point of contact for the sector.
- ii. Harnessing the views of the sector.

3. Objectives

The LTSC have a number of objectives that support the above aims and which intend to:

- i. Provide a Forum to share best practice and experience.
- ii. Provide joint training opportunities.
- iii. Strengthen the relationship with Commissioners.
- iv. Raise awareness of the services provided by the Third Sector.
- v. Facilitate partnership working amongst Consortium members.
- vi. Identify and respond to gaps in Mental Health service provision across Lancashire.
- vii. Meaningfully engage Service Users and Carers.

4. What We Provide

- i. Bi-monthly Forum, open to all members and guests, with talks from members and invited speakers.
- ii. Website - The LTSC website acts as the central information hub for the membership, as well as a showpiece of the sector to the outside world. The site is updated daily.
- iii. Communication network - through the LTSC network we facilitate communication between members and also highlight national policy and news information on mental health issues.
- iv. A Voice - the LTSC provides a single voice on mental health issues on behalf of the third sector. Being the representative of a significant number of third sector agencies allows us access to key people within the

statutory services so that we are able to lobby on key issues and receive key and timely information, first hand, for dissemination to our members.

- v. Working Groups – These are formed on an ad hoc basis to support member needs. Example working groups are: Funding, Personalisation and Marketing.
- vi. Training – the LTSC facilitates training opportunities for the membership, ranging from member provided to external courses.

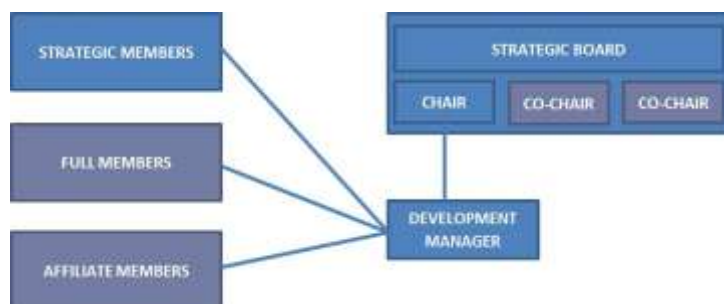
5. Member Levels and Organisation

There are three levels of membership to the LTSC - Affiliate, Full and Strategic, with increasing levels of commitment and expectation as you move through the levels.

Governance and strategic direction for the Consortium are provided by a board of Strategic Members who work in accordance with a signed Collaboration Agreement. Members at this level are actively involved in the development of the Consortium and in representing the Consortium on external panels and working groups and there is therefore an increased expectation of time commitment to LTSC work.

The Strategic Board elect a Chair and two Co-Chairs from their number on an annual basis. All Board members contribute their time to the Consortium on a voluntary basis.

There is one dedicated worker for the LTSC, the Development Manager, who is employed on a part time consultancy basis.



6. Service User Involvement and Membership

Service Users [and Carers] are welcome and are encouraged to become members of the LTSC at Affiliate level. A database of support and network groups for service users / carers is provided on the LTSC website.

Through the LTSC membership the Consortium are able to access and engage with an extensive network of service users and carers from across the county of Lancashire.

7. Contact Information

Chair: Mark Lunney **tel:** 01257 231 660 **email:** marklunney@lancashiremind.org.uk

Development Manager: Katharine Wykes **tel:** 07884 295 399 **email:** info@LTSCmentalhealth.org.uk

Website: www.LTSCmentalhealth.org.uk

Address: LTSC for Mental Health
PO Box 295
LYTHAM ST. ANNES
FY8 9EX